



Partners proposal



**Explore MAP
RAS Juvenile**

From Planning through Branding

PREPARED FOR:
Aquaculture Industry



MAP is an Aquaculture company founded by veteran large-scale operators, which includes a network of multidisciplinary experts and trusted partner entities to provide you with a MAP to successfully Navigate to your objectives in Aquaculture along the entire value stream.

We are recognized for our practical innovative approach, honest analysis, and our wide vision that provides projects with leading technology and operational excellence.

WHY WE ARE HERE?

The Challenges

I: Our world's growing population and seafood consumption.

II: Many heavy Industrial activities hamper the carrying capacity and seafood productivity of the natural waters.

III: Aquaculture exceedingly relies on natural resources which defeats its essence.

IV: Short-sited investment and Lack of knowledge and experience.

V: Frequent endeavor partial or complete failures and low success rate.

VI: Lack or over Confidence of Aqua investors.

Our Approach

I: Productivity - Produce More with Less!

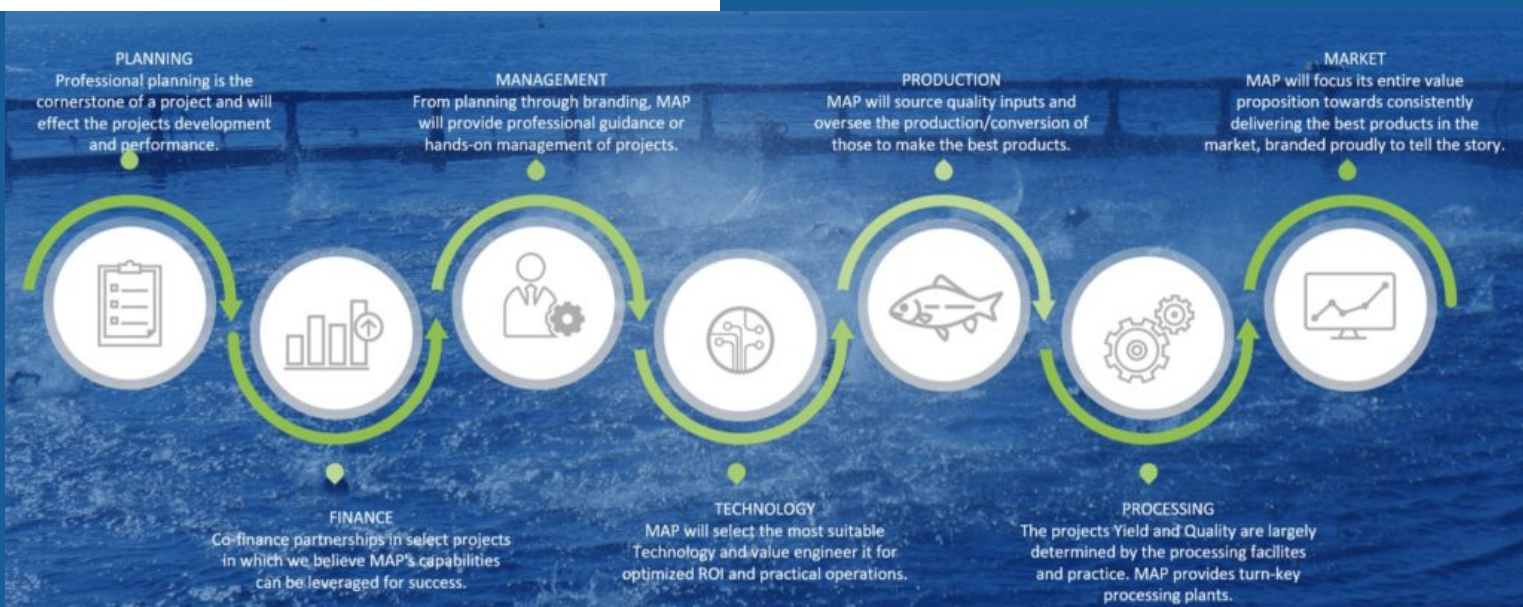
II: Enhance natural ecosystems with fish!

III: Vertical Integration Projects (VIP's) to close all loops and recycle all INPUTS!

IV: Navigate investors and operations and integrate the wisest solutions holistically. "Planning through Branding!"

V: Partner with endeavors based on success and not selling a certain product!

VI: MAP the value stream and maintain the balance between Potential and Reality!



We are on your Team!



Yedod Snir
Founder, CEO &
Lead RAS Designer



Israel Snir
President & Founder



Mario Ramirez
CTO & Co-Founder



Larissa Dias
Marketing & Sales



Allan Reyes
Cages Specialist



Yaron Shaool
Administration



Denis Josué Mancía
Hatchery &
Production Expert



Novian Nur Andresena
Architectural Design



Luis Enrique Ornelas
Civil Engineering



Mario Gonzalez
Mechanical Engineering



The four **E**'s:

Our Experience proves that when organizations Ethically invest in their people and Environmental stewardship, they create cohesiveness and unity towards a common goal and gain long-term Economic success and sustainability.

THE ESSENCE OF AQUACULTURE

VISION

Aquaculture industry's success to grow healthy seafood to reduce our impact on the Land and Oceans is crucial for our future!

MISSION

MAP will support Aqua endeavors to achieve and exceed they're Productive, Economical, and Social goals, with minimal dependence on natural resources to promote the industry's Sustainable Growth.

MAP Juvenile System

MAP has designed, built, and managed several successful RAS facilities from Hatchery through Growout, acquiring the expertise to deliver Juvenile RAS facilities that are groundbreaking in terms of CAPEX, OPEX and innovation.

What we solve for?

Disease - Vertically transmitted viral and bacterial

Genetics - Inconsistent and reliance on external sources

Weather - Inconsistent weather and seasonality of production

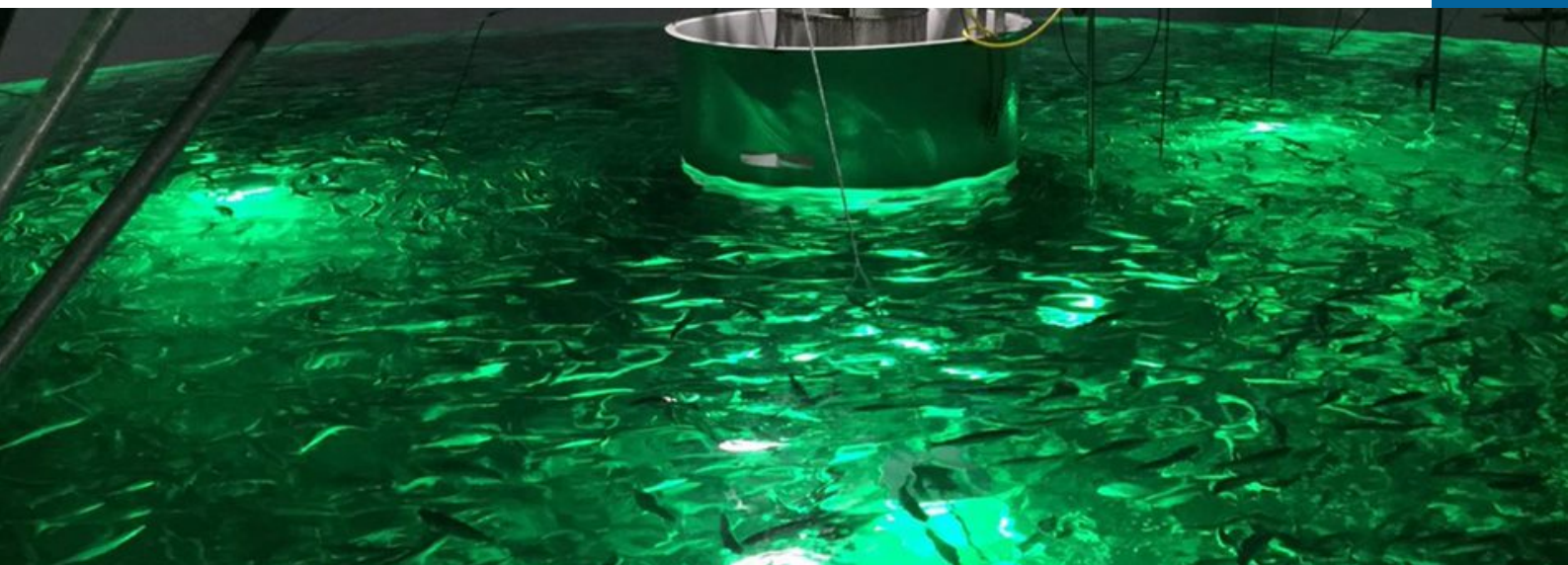
Labor - Manual operations require a trained and expensive labor force

Logistics - Long-distance transport of Juveniles

Natural resources - Reliance and impact on Land, water, and environment

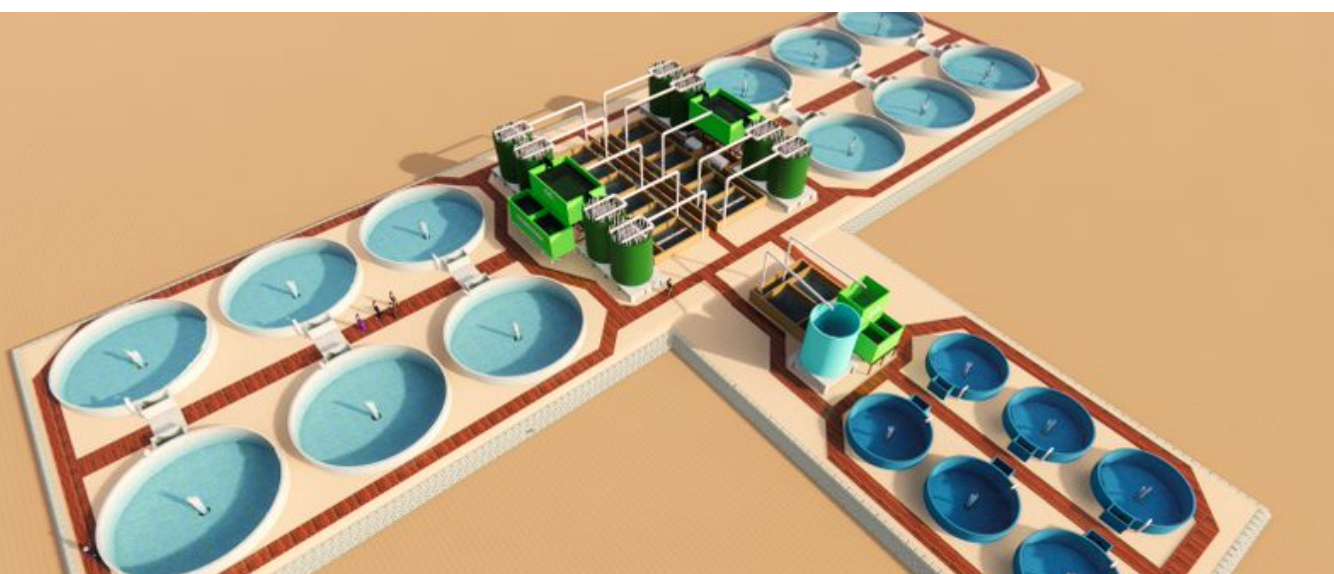
Quality - Weakened and stressed seed's hampering Growout performance

AND OUR SOLUTION?



Challenges create opportunities!

MAP Juvenile RAS sets conditions to protect and nourish the fish in its most sensitive stage in a highly controlled environment, resulting in enhance performance in the growout and the entire project.



In 2020 MAP founders set out to design and build the most innovative and cost-competitive RAS Juvenile System out there.

Our ultimate focus is to provide a modular system for optimizing growth conditions, particularly in the early stages, which are critical for healthy fish development. Temperature, vaccination, oxygen, and bio-security all boost immunity and resiliency, resulting in year-round performance.

Our design combines practical experience with state-of-the-art research and technology to assure the quality and consistency of the Juveniles and grown fish.



Features of MAP's Juvenile

Innovative technology to overcome challenges and continuously enhance productivity and efficiency.



Commercially proven design that works for warm and Coldwater species

Interfaces with MAP hatchery for a seamless bio-secure production process



Low head pumping due to unique filtration and oxygenation components

Easy to operate reducing the need for professional labor



Temp-controlled RAS for year-round production in temperate zones

Segmented life support systems and AIAO production



Built in Redundancy at every stage of the process

Mechanized fish transfer and Automated monitoring systems



Technical Parameters

Min/max Capacity (mt/yr): 250-2500	Density harvest (kg/m3): 30-60
Footprint productivity (kg/m2/yr): ~150	Water exchange (%/day): ~3-5%
Stock/Harvest avg weight (gr): 1.5→30-100	Temp range (Deg C): 14-28
Labor productivity (mt/pe/yr): ~50	Full Automation: Yes
Expected Survival rate (%): 95-85%	CAPEX Invest (\$USD/kg/yr): \$5.0-7.5
Pure Oxygen: Emergency - Yes	Pure Oxygen: Production - Optional

MAP Juvenile RAS design is customized and modular to adapt to the requirements of each project which allows for flexibility and competitiveness.

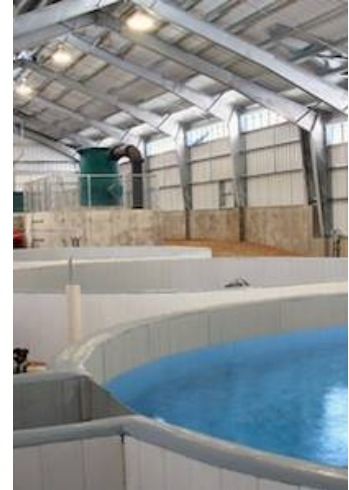
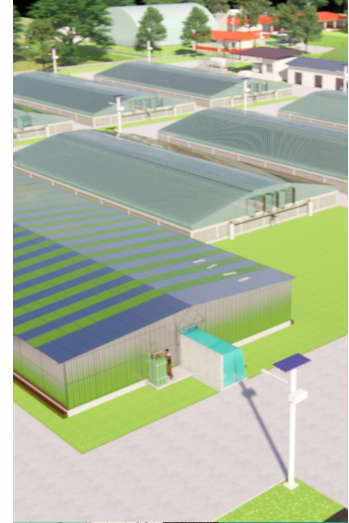
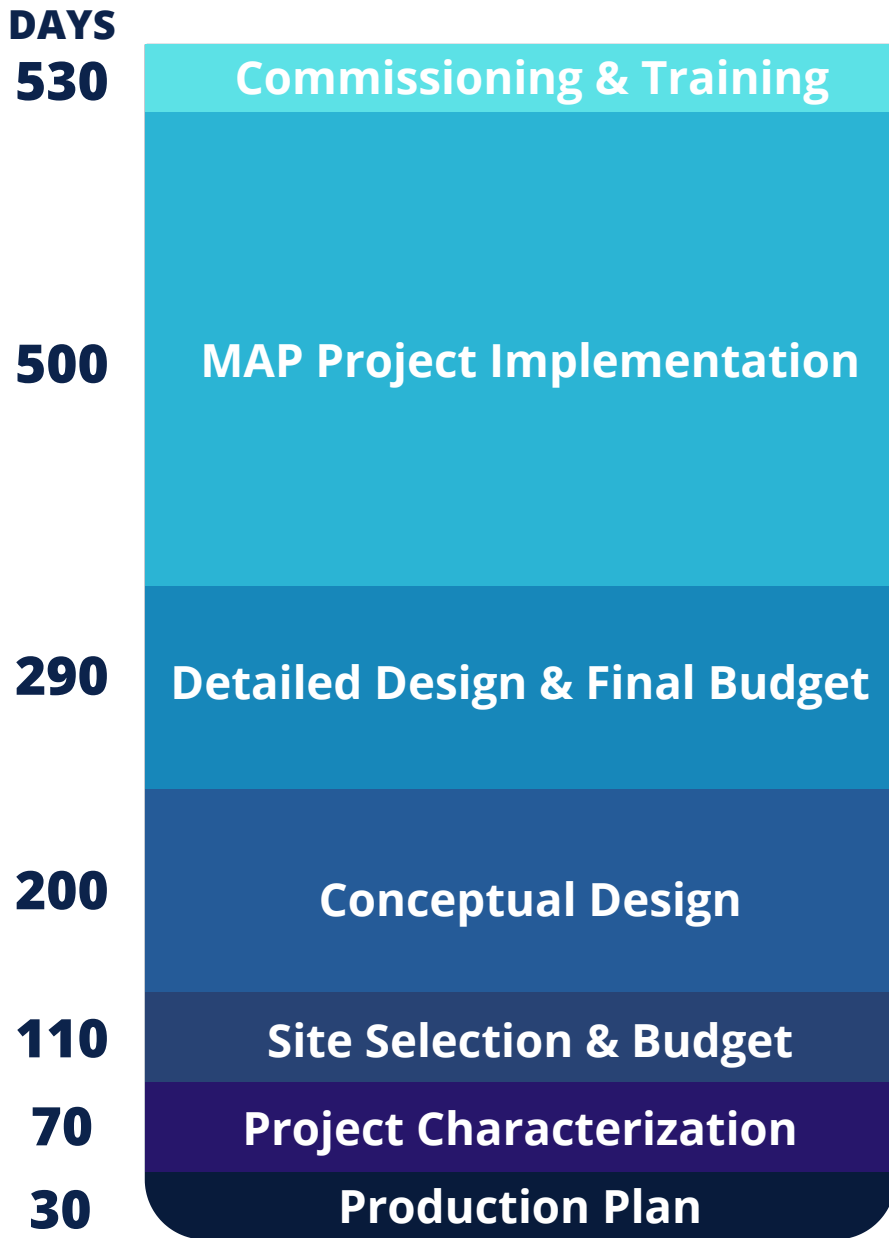
What you can count on:

- ✓ Lower mortality
- ✓ Improved disease immunity
- ✓ Better Growout performance
- ✓ Zero therapeutants
- ✓ Less water and Energy usage
- ✓ Less labor
- ✓ Lower conversion rates (FCR)
- ✓ Lower CAPEX and OPEX
- ✓ Smaller footprint
- ✓ Year-round production
- ✓ Disease resilience
- ✓ Genetics selection program



Expected Timeline

From Planning to Production, you will have your complete and customized juvenile system in only 530 days.



Shortening the learning curve!

Our design approach will help you reach your business targets sooner and in a more cost-effective way. We'll work closely with you to create a facility that meets your needs and improves the quality of your fish.



Navigate with us on your Aqua Journey towards Success!



Why partner with us?

- MAP is founded and owned by veteran large scale Aqua operators.
- Our mission is to help more Aqua projects succeed and to tailor our solutions to their REAL needs.
- We are not married to any specific technology and always will pursue the best interest of our partners.
- We work with a broad network of industry experts who we know and trust to support us and our partners with any specific or unique challenge.
- At MAP we work diligently and tirelessly until the set goals for the project are met or exceeded to our partners satisfaction.
- As operators we can stay engaged in Production well beyond the design, integration and commissioning as long as our partner requests.

THANK YOU!

We look forward to working with you.



www.mapaqua.com

info@mapaqua.com

+1 (413) 768-9300

